



GIANT



**HUNTER
DURANT**
REAL ESTATE ADVISORY FIRM



18 CAMPUS

**17 CAMPUS
& AMENITY CENTER**

14 CAMPUS



15 CAMPUS

11 CAMPUS

NEWTOWN SQUARE

CORPORATE CAMPUS





NEWTOWN SQUARE

CORPORATE CAMPUS

Join the most amenity rich corporate location in Delaware County

Why – Professional. Convenient. Fun. Accessible. Affordable.

The Project – Newtown Square Corporate Campus is a one of a kind opportunity for companies large and small to occupy the highest quality amenitized office space in the region.

Location – Newtown Square is home to a live, work, and play environment which features high end hospitality, main street and regional retail, corporate clientele, high end educational institutions, and an influx of new housing. The environment and access to prime local labor and educational markets allows the area to uniquely support established and growing businesses in a convenient way relative to alternative locations.

Opportunity – The modern employee desires convenience. The days of working in an isolated environment are gone. We provide on site fitness amenities, ample convenient parking, high end space, and convenient access to retail amenities – all within distance of multiple local and regional highways/thorofares.

Who Is Here:

Newtown Square is home to major national and local companies at or within **1 Mile** of the Newtown Square Corporate Campus.



Drive Time Map

15 Min Drive Time

- Exton 5 min
- Malvern 10 min

30 Min Drive Time

- West Chester 17 min
- King of Prussia 20 min
- Conshohocken 26 min

45 Min Drive Time

- Center City, Phila. 35 min
- Lansdale 40 min
- Pottstown 41 min
- Wilmington, DE 45 min
- Cherry Hill, NJ 45 min

> 45 Min Drive Time

- Lancaster 55 min
- Allentown 65 min





956
 Hotel Rooms
 Within **15** Minutes



New
 Full Service
 Fitness Center



On Site
 Conference
 Center



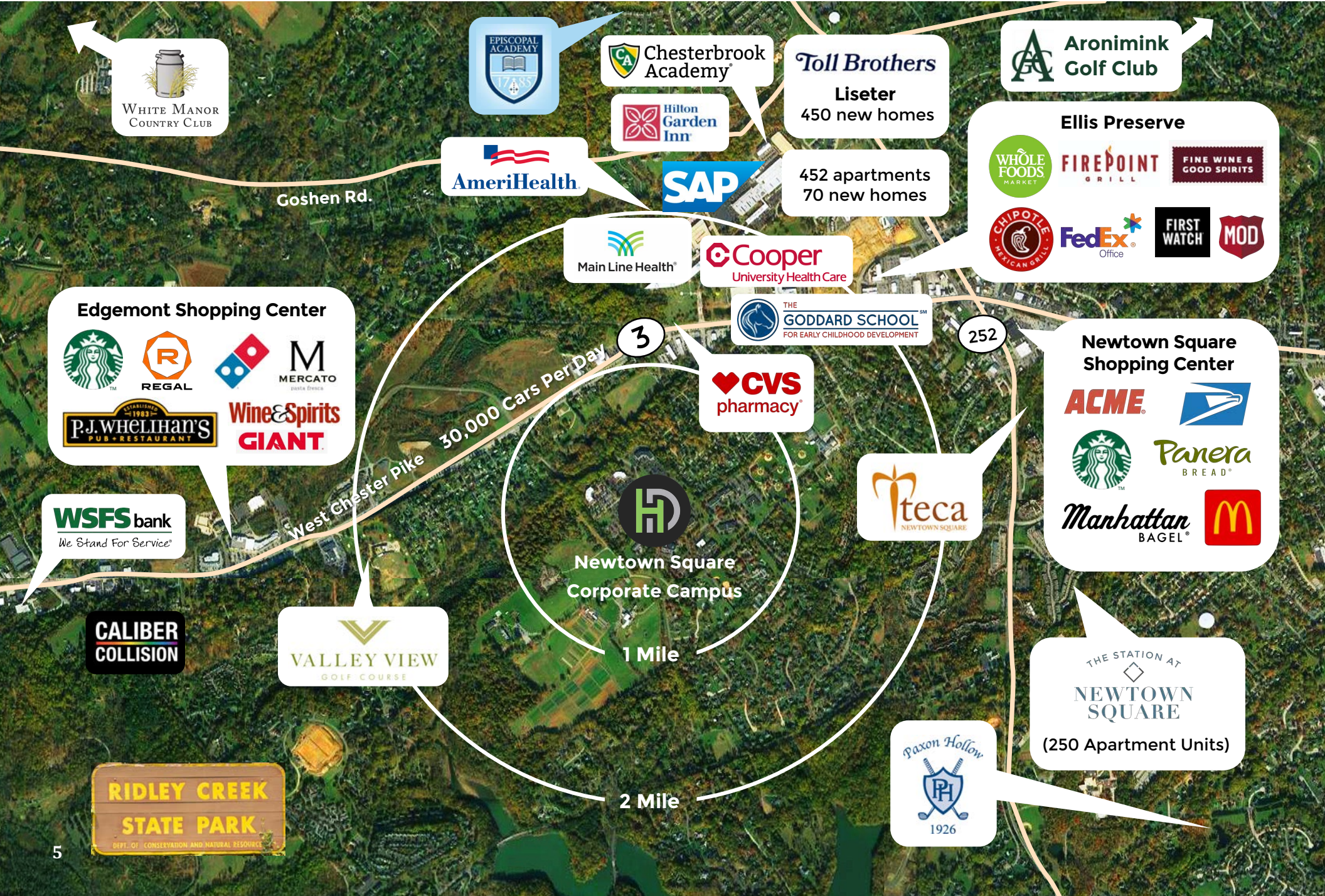
8 Golf Clubs
 Within **15** Minutes



Runner-Friendly
 Campus

Aerial View

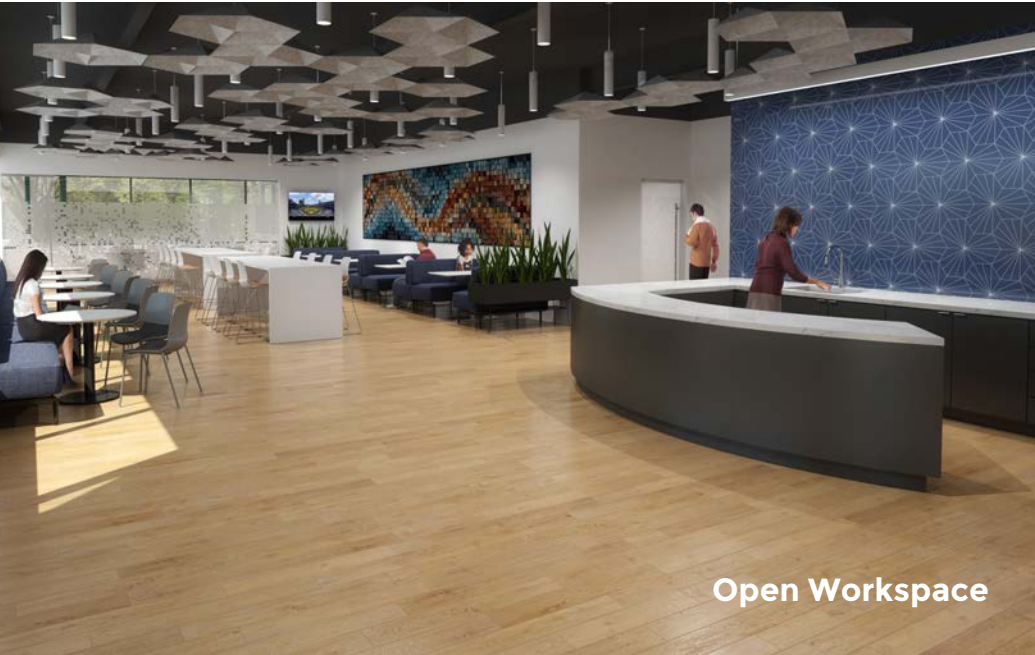
NEWTOWN SQUARE CORPORATE CAMPUS



Amenity Center

2023 Opening

NEWTOWN SQUARE
CORPORATE CAMPUS



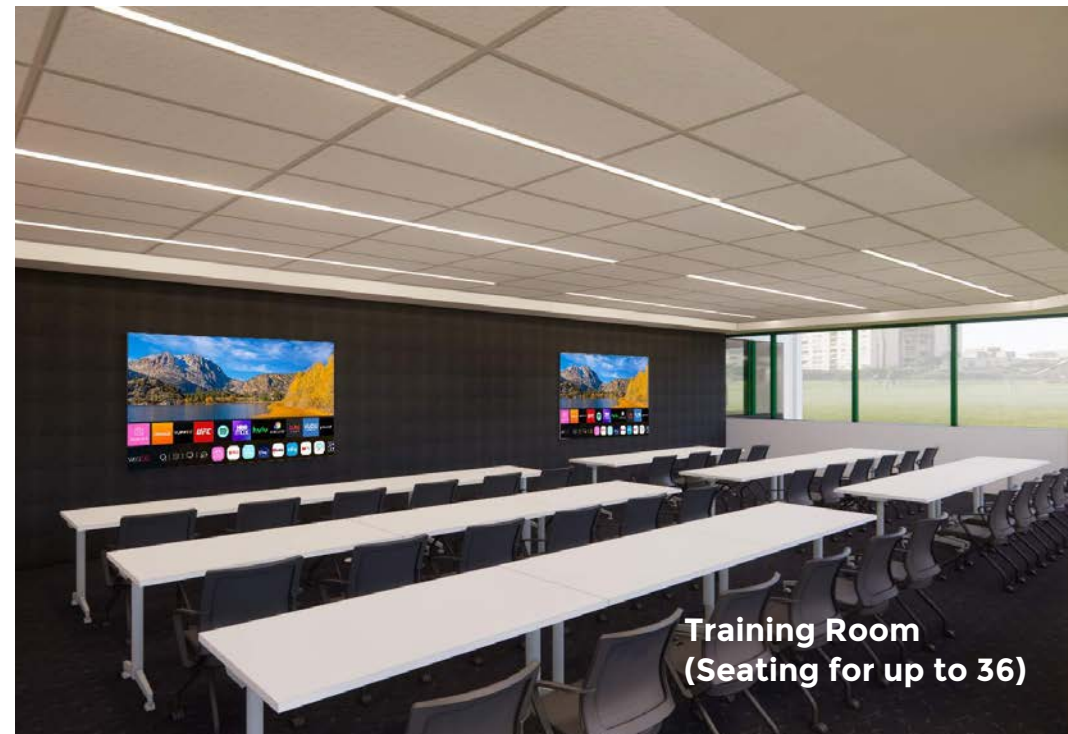
Open Workspace



Conference Room



Fitness Room



Training Room
(Seating for up to 36)

Availabilities

11 Campus Blvd:

Full or Partial 2nd Floor: 6,439 – 25,756 SF



14 Campus Blvd:

Full or Partial Building Availability Demisable Options:

- 68,862 Sq Ft
- 45,908 Sq Ft
- 22,954 Sq Ft
- 11,477 Sq Ft
- 5,738 Sq Ft



15 Campus Blvd:

Full or Partial 2nd Floor: 3,000 – 25,756 SF



17 Campus Blvd:

Full or Partial 2nd Floor: 6,439 – 25,756 SF



18 Campus Blvd:

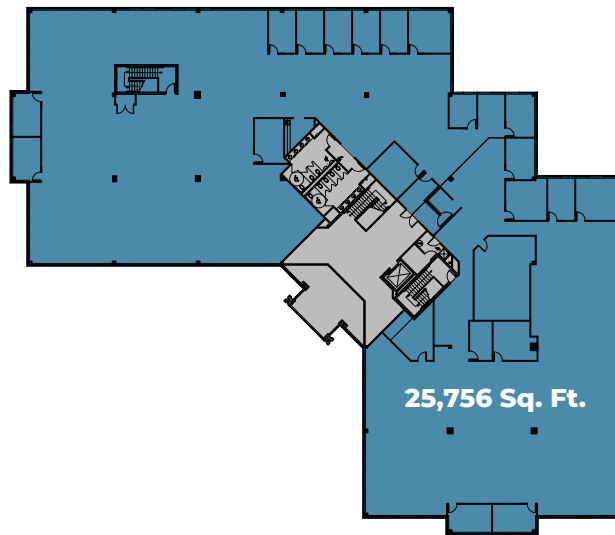
2nd Floor: 13,842 SF



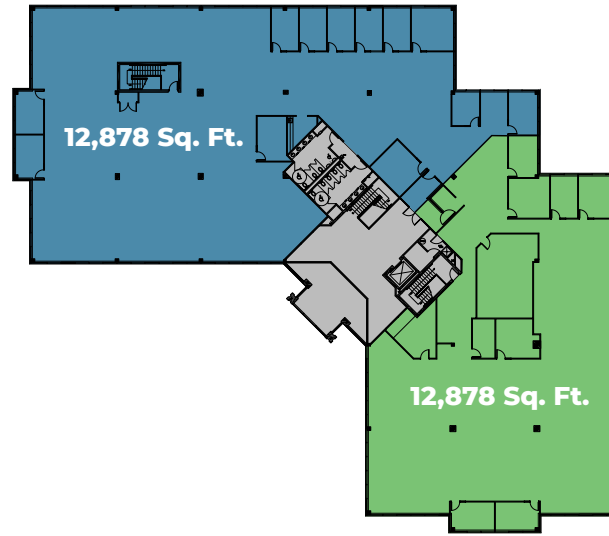
11 Campus Blvd

Demising Options: 2nd Floor

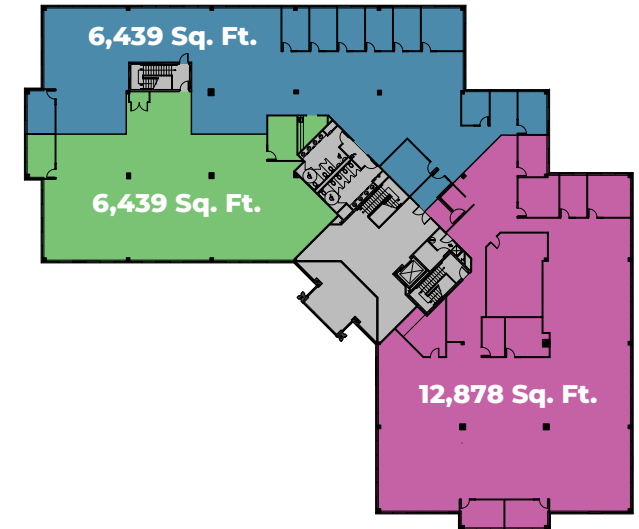
Option 1



Option 2



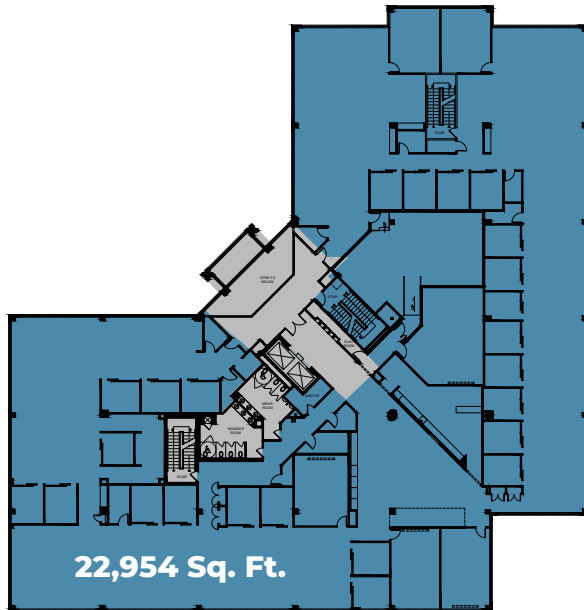
Option 3



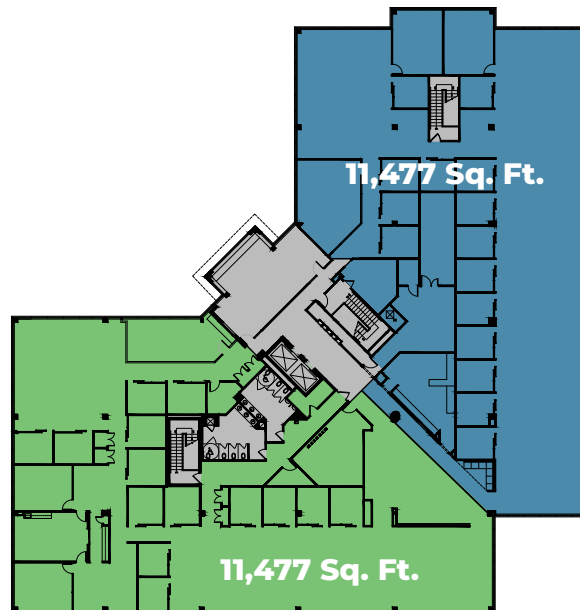
14 Campus Blvd

Demising Options

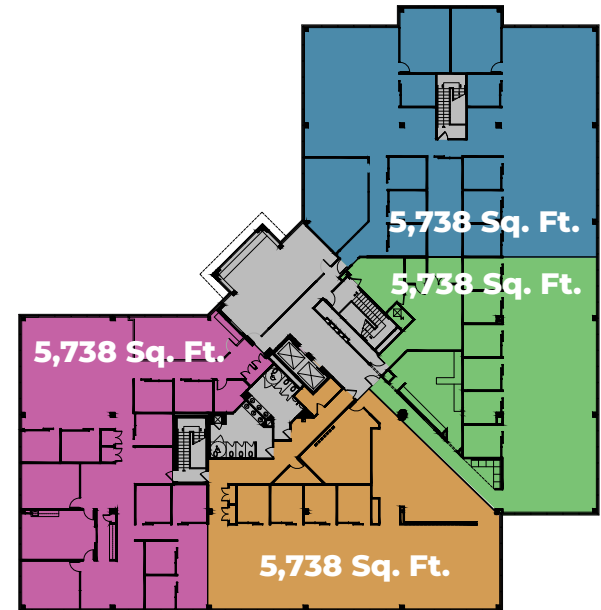
Option 1



Option 2



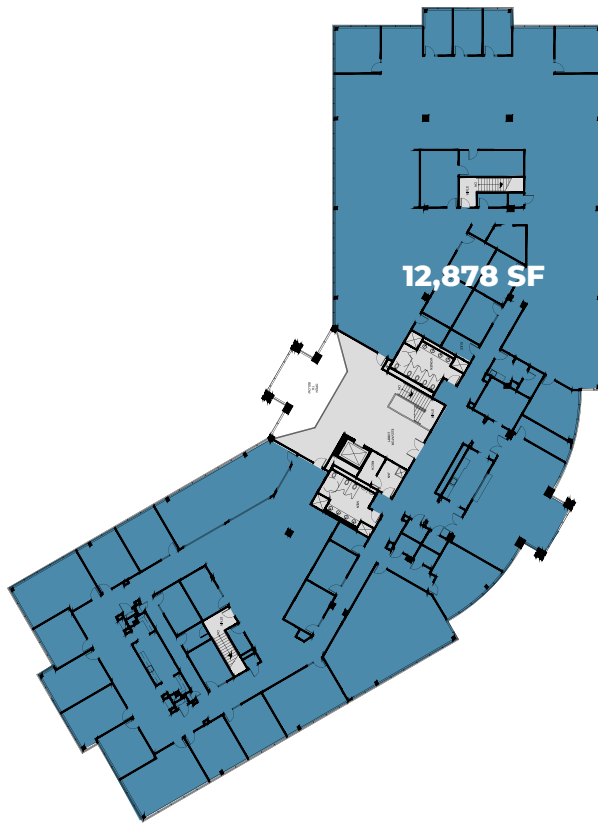
Option 3



15 Campus Blvd

Demising Options: 2nd Floor

Option 1



Option 2



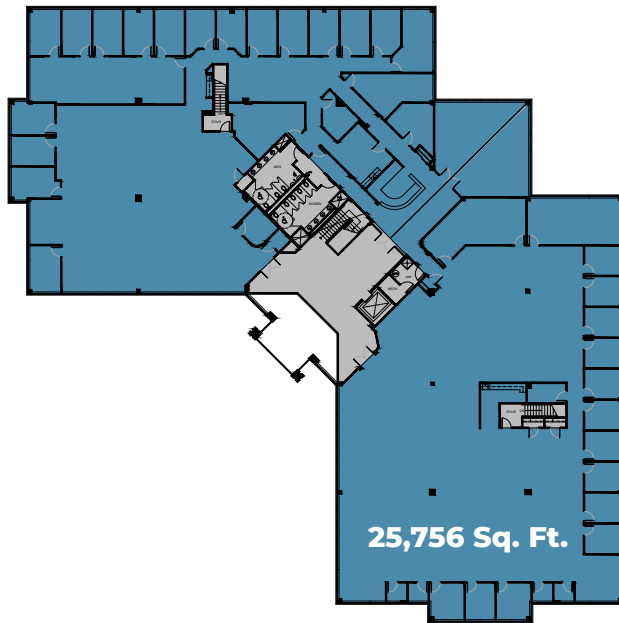
Option 3



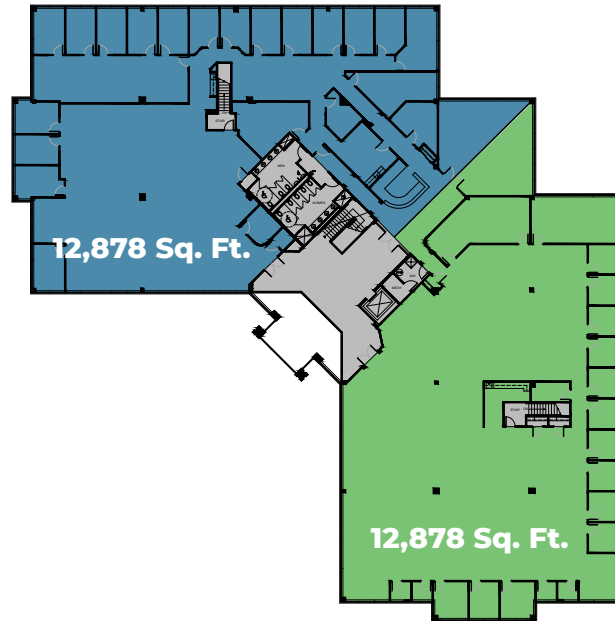
17 Campus Blvd

Demising Options: 1st Floor

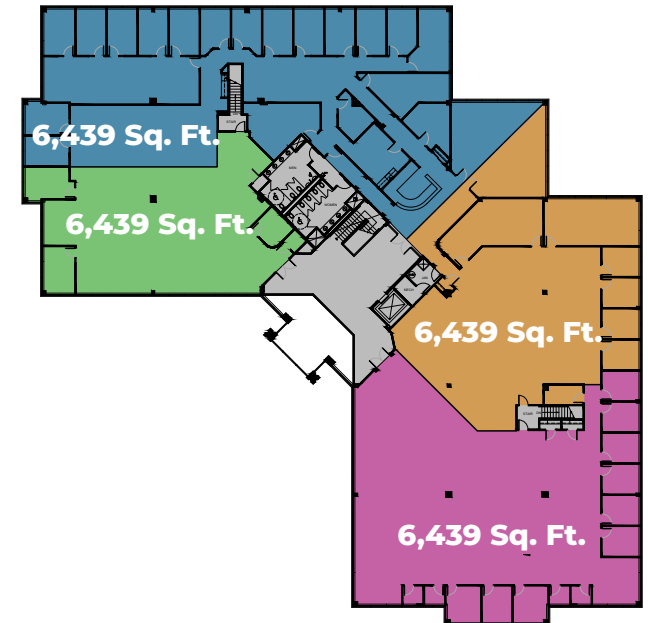
Option 1



Option 2



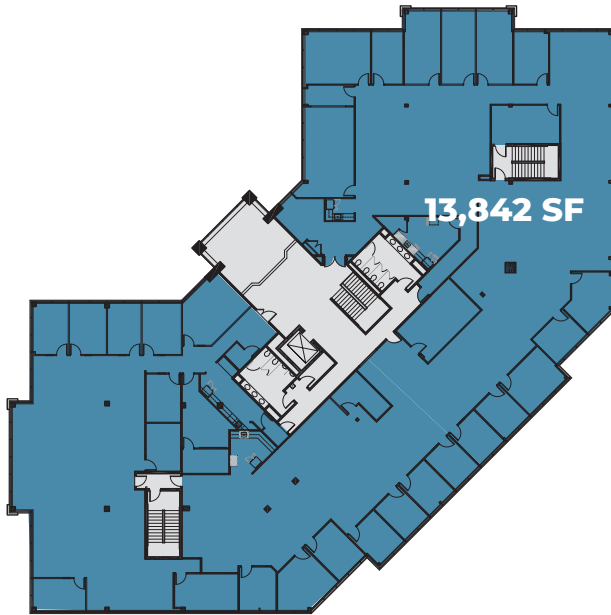
Option 3



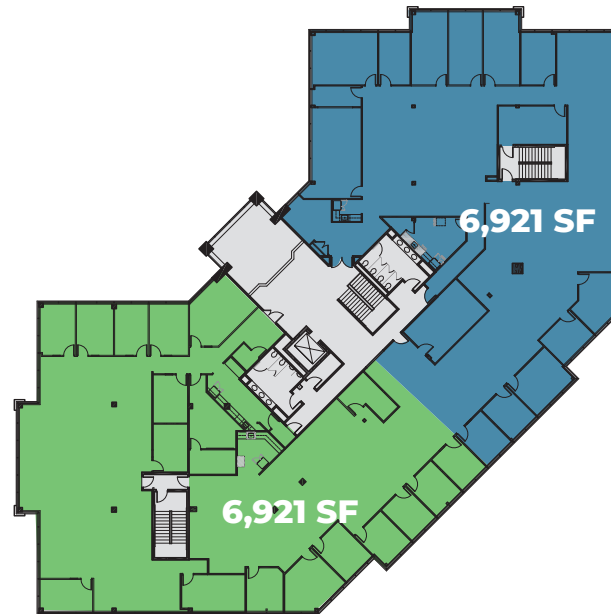
18 Campus Blvd

Demising Options: 2nd Floor

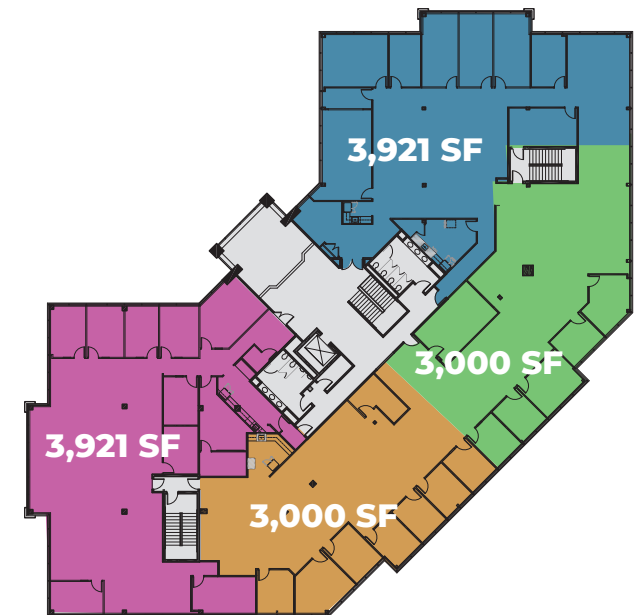
Option 1



Option 2



Option 3



Call Us

AUSTIN WOLFINGTON

610-222-5500 x 2

awolfington@hunterdurant.com

TJ DOYLE

610-222-5500 x 1

tdoyle@hunterdurant.com

TRIPP TRAYNOR

610-222-5500 x 5

ttraynor@hunterdurant.com



**HUNTER
DURANT**
REAL ESTATE ADVISORY FIRM

www.HunterDurant.com